





## 5 Malvern Close, Royton

£359,950

🛏 4 🚿 2 🛋 2



- Semi Detached Family Home • Four Bedrooms
- Two Bathrooms • Extended
- Lovely Condition Throughout • Superb South Facing Garden
- Close To Royton Centre • EPC Rating - C





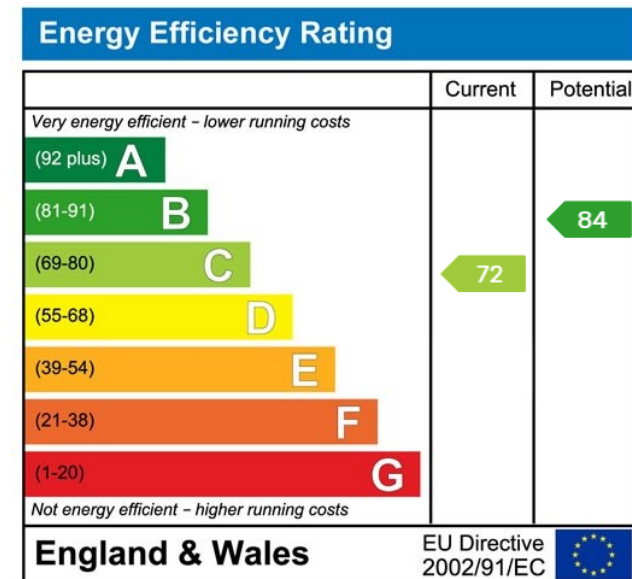
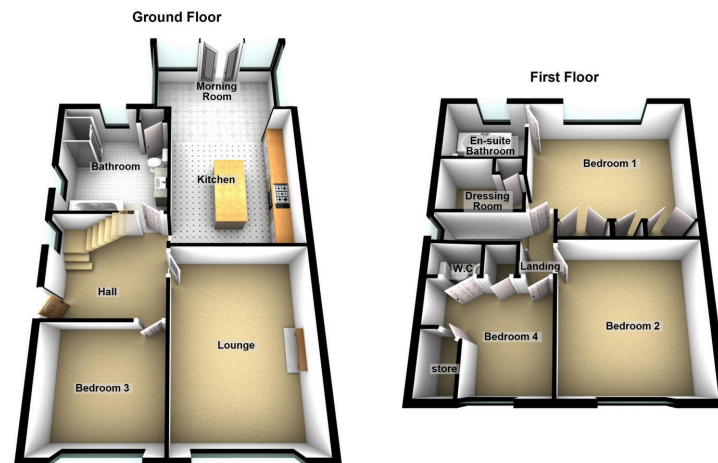
Offered for sale is this stunning four bedroom semi detached family home located in 'Royley' in Royton.

Presented in superb condition throughout and having been extended to create a spacious property.

Accommodation comprising: Entrance hallway, lounge, kitchen/ breakfast room, morning room, bedroom and a large four piece bathroom. To the first floor there is a main bedroom with en suite bathroom and dressing room, two further bedrooms and a WC.

Externally there is a south facing garden, garage and a store room. Driveway parking to the front, Local shops and amenities within easy reach.

Contact us today to arrange a viewing



#### Chadderton Office

509 Middleton Road,  
Chadderton, Oldham,  
OL9 9SH

chadderton@kirkham-property.co.uk  
t: 0161 626 5688