



Primrose Hill Court, Shaw

£154,950

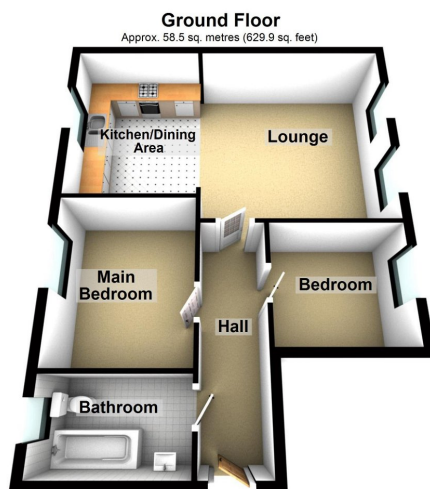
🛏 2 🪑 1 🛋 1



- Ground Floor Apartment
- Two Bedrooms
- Large Kitchen/Dining/Lounge
- No Chain
- Great Location
- Wonderful Condition Throughout
- Allocated Parking Space
- EPC: C



NO CHAIN. Offered for sale is this very well presented two bedroom ground floor apartment located in this very popular spot in High Crompton. Accommodation comprising: Entrance intercom system, hallway, large lounge with open plan kitchen/dining area, two bedrooms and a large bathroom. Externally there is an allocated parking space and communal grounds. Local shops within a very short walk as is Shaw centre itself. The property is offered in wonderful condition so you could move straight in. Call us today to arrange an appointment to view.



Total area: approx. 58.5 sq. metres (629.9 sq. feet)

Chadderton Office

509 Middleton Road,
Chadderton, Oldham,
OL9 9SH

chadderton@kirkham-property.co.uk
t: 0161 626 5688