





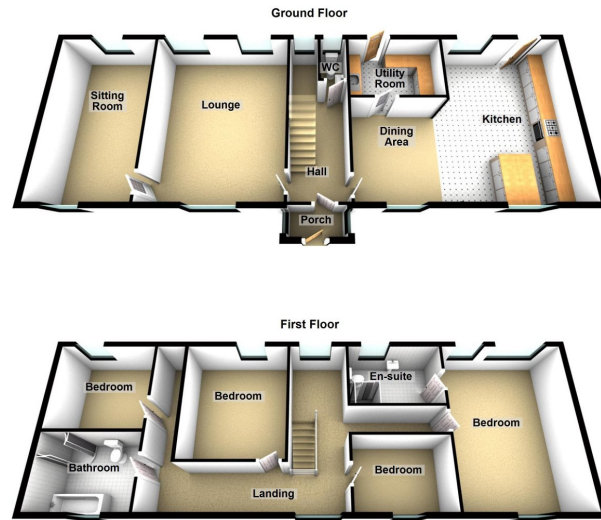
# Holly Grove, Diggle, Saddleworth

£775,000

🛏 4 🍽 2 🛋 2







This Grade II listed farmhouse is situated in a semi rural hamlet of just a handful of properties with superb views over Diggle village and further afield. Holly Grove Farm Cottage features rear (south facing) and side (west facing) gardens which are relatively low maintenance for their size and provide great outdoors spaces to entertain and enjoy the fantastic views down the valley.

### Uppermill Office

35 High Street  
Uppermill,  
Saddleworth  
OL3 6HS

Monday – Friday. 9am – 5pm  
Saturday. 10am – 3 pm  
uppermill@kirkham-property.co.uk  
t: 01457 810 076  
f: 01457 810 222

Out of hours telephone service  
Monday – Thursday 8:30am – 7pm  
Friday – 8:30am – 5pm  
Saturday – Sunday 10am – 3pm

[www.kirkham-property.co.uk](http://www.kirkham-property.co.uk)