

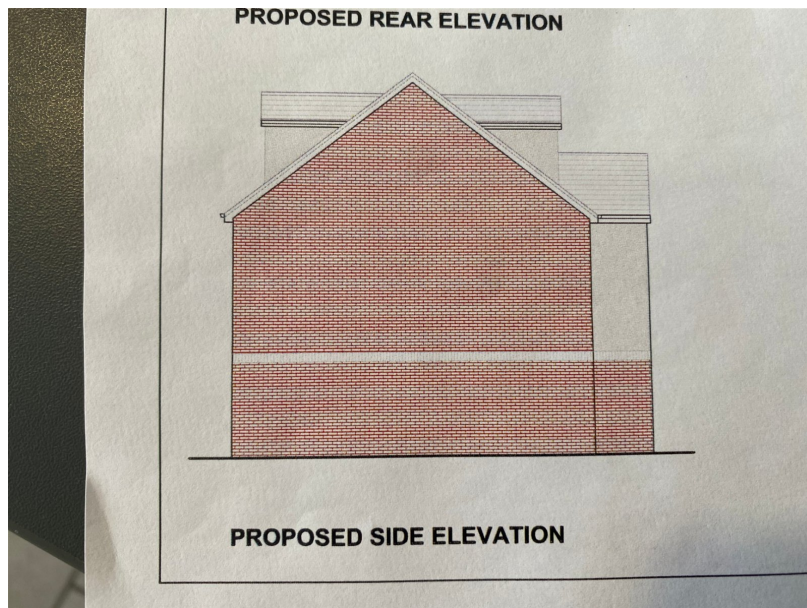
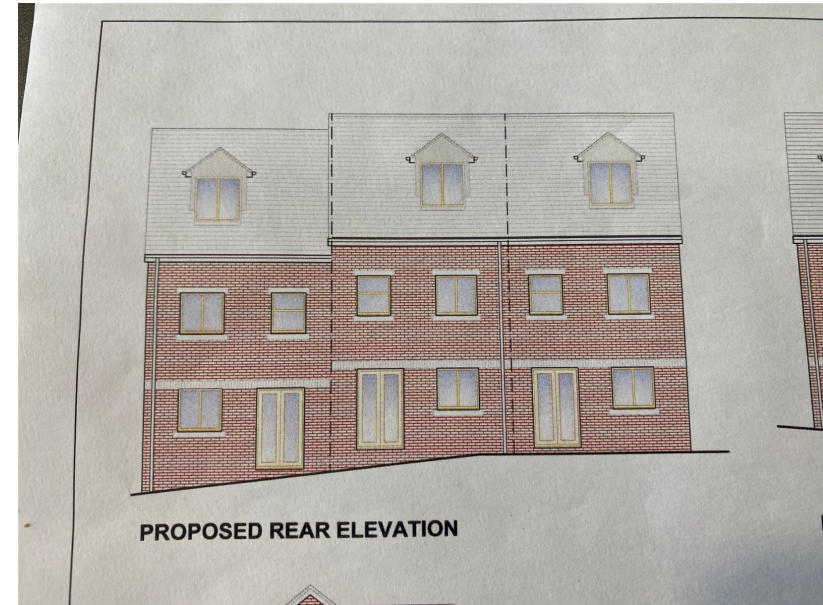
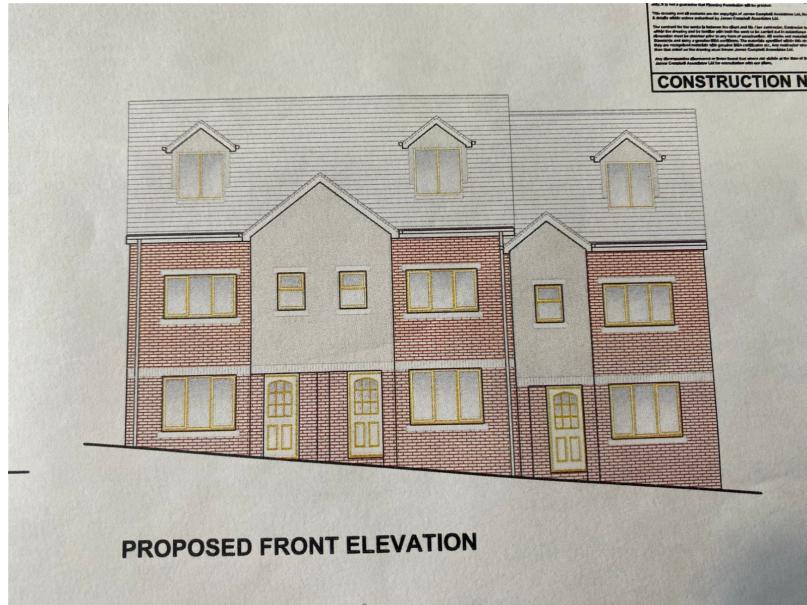




# Sholver Lane, Moorside

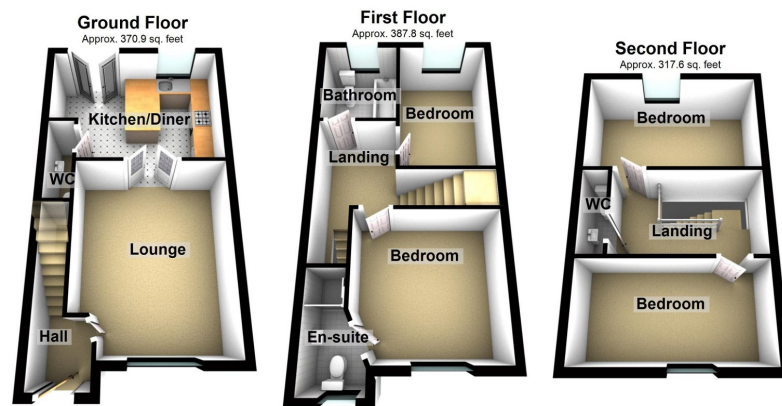
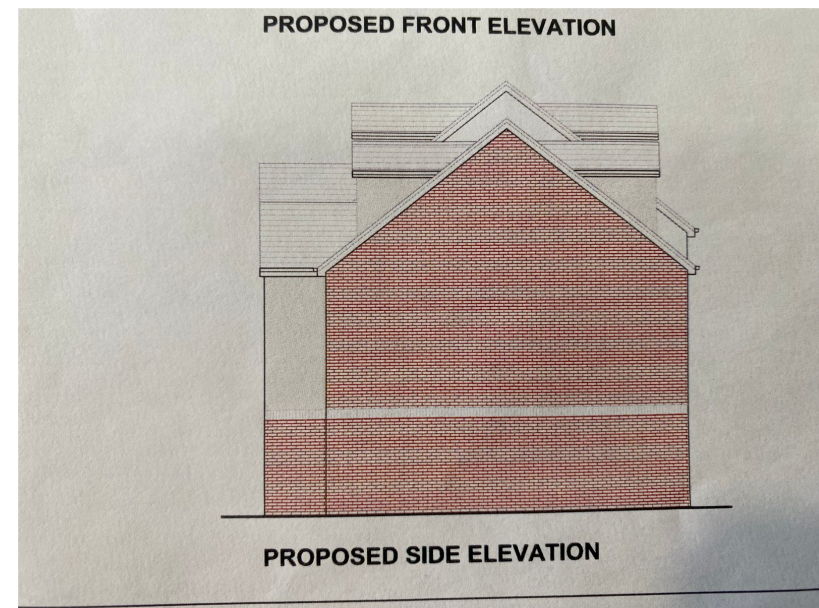
£264,950

🛏 4 🚿 3 🚗 1



- Brand New Build
- Four Bedrooms
- Well Stocked Kitchen
- Combi Boiler System
- Three Storey Town Houses
- En Suite To Master
- CML Building Certificate
- uPVC Double Glazing

A fantastic opportunity to purchase one of these brand new builds located in Moorside. Two end and one middle three storey town house offering good size accommodation throughout. Four bedrooms, master ensuite, top floor WC, first floor bathroom. To the ground floor a good size lounge, kitchen dining room and a cloakroom WC. Combi boiler system and uPVC double glazed throughout. One allocated parking spaces per property. Call us today to arrange a viewing. CML Building Certificate. Located within a short distance of Saddleworth and surrounding countryside. Built in 2022 by Howe Developments.



Total area: approx. 1076.2 sq. feet

#### Royton Office

64 Rochdale Road,  
Royton, Oldham,  
OL2 6QJ

Monday – Friday. 9am – 5pm  
Saturday. 10am – 3 pm  
royton@kirkham-property.co.uk  
t: 0161 626 9789  
f: 0161 652 0514

Out of hours telephone service  
Monday – Thursday 8:30am – 7pm  
Friday – 8:30am – 5pm  
Saturday – Sunday 10am – 3pm

[www.kirkham-property.co.uk](http://www.kirkham-property.co.uk)