



Newark Park Way, Royton

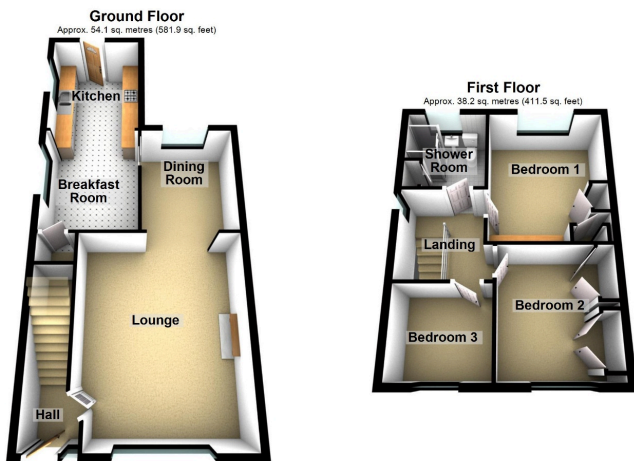
£259,950

🛏️ 3 🚗 1 🚗 1



- Extended, Semi-Detached, Family Home
- Three Bedrooms
- Garage & Driveway Parking
- Just A Short Walk To Tandle Hill Country Park
- No Chain
- In Need Of Some Modernisation
- Gardens To The Front & Rear
- EPC Rating - D

No Chain. Located within a short walk of Tandle Hill Country Park is this extended, three bedroom, semi-detached family home. In need of modernisation but offering superb accommodation comprising of: entrance hallway, lounge, dining room, breakfast room and kitchen to the ground floor and to the first floor three bedrooms and a shower room. Externally a superb driveway, garage and private rear garden. Call us to arrange a viewing.



Total area: approx. 92.3 sq. metres (993.4 sq. feet)

Score	Energy rating	Current	Potential
92+	A		
81-91	B		84 B
69-80	C		
55-68	D	56 D	
39-54	E		
21-38	F		
1-20	G		

Royton Office
64 Rochdale Road,
Royton, Oldham,
OL2 6QJ

Monday – Friday. 9am – 5pm
Saturday. 10am – 3 pm
royton@kirkham-property.co.uk
t: 0161 626 9789
f: 0161 652 0514

Out of hours telephone service
Monday – Thursday 8:30am – 7pm
Friday – 8:30am – 5pm
Saturday – Sunday 10am – 3pm