

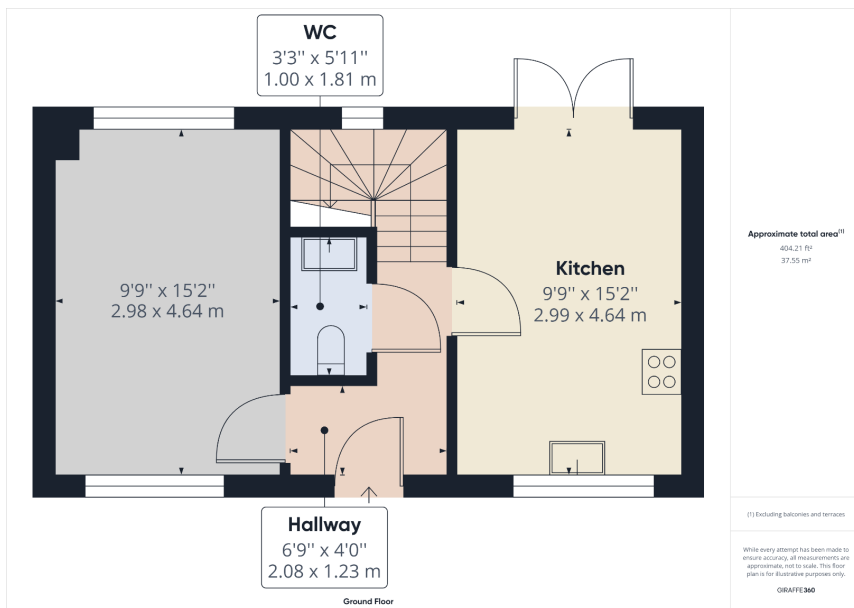


# 10 Alderman Close, Greenfield, Saddleworth

£500,000

🛏️ 4 🚿 4 🛋️ 1





Boasting the largest plot size on offer on the development providing more parking and garden area is this four bedroom executive detached house, tucked away in the corner on Alderman Close. This development is in the heart of Greenfield Village and has access to everyday amenities on your doorstep. There are excellent primary schools in walking distance, a brand new secondary school in nearby Diggle Village and countryside walking routes available at Dovestones.

### Uppermill Office

35 High Street  
Uppermill,  
Saddleworth  
OL3 6HS

Monday – Friday. 9am – 5pm  
Saturday. 10am – 3 pm  
uppermill@kirkham-property.co.uk  
t: 01457 810 076  
f: 01457 810 222

Out of hours telephone service  
Monday – Thursday 8:30am – 7pm  
Friday – 8:30am – 5pm  
Saturday – Sunday 10am – 3pm