

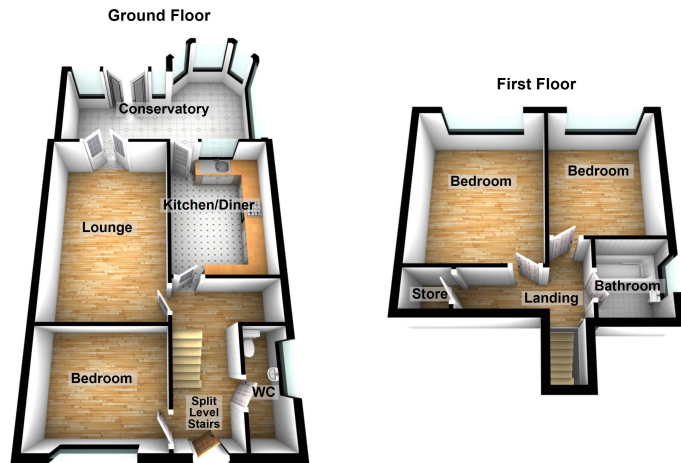


Heywood Fold Road, Springhead, Saddleworth

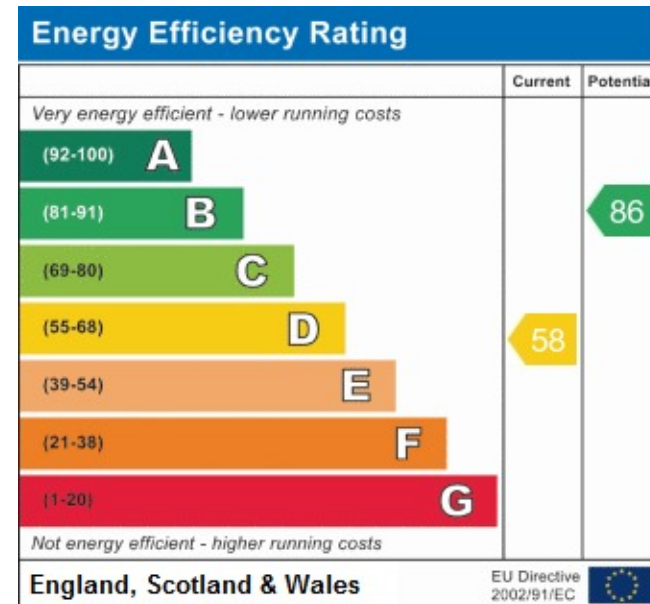
£280,000

3 1 2





Presented to the market in excellent walk-in condition is this three bedroom semi detached house on Heywood Fold Road in Springhead. A credit to the current homeowners with a modern and high specification finish throughout. Internal inspection will be highly warranted to appreciated the standard of finish.



Uppermill Office

35 High Street
Uppermill,
Saddleworth
OL3 6HS

Monday – Friday. 9am – 5pm
Saturday. 10am – 3 pm
uppermill@kirkham-property.co.uk
t: 01457 810 076
f: 01457 810 222

Out of hours telephone service
Monday – Thursday 8:30am – 7pm
Friday – 8:30am – 5pm
Saturday – Sunday 10am – 3pm